



Brookfield Renewable yw prif gwmni pŵer adnewyddadwy rhestrdedig Brookfield Asset Management, rheolwr asedau amgen blaenllaw yn fyd-eang gyda gwerth \$285 o asedau'n cael eu rheoli.

Mae Brookfield Renewable wedi'i restru ar gyfnewidfa stoc Efrog Newydd a Toronto. Mae rhagor o wybodaeth ar gael yn <https://bep.brookfield.com>.

Mae Brookfield Renewable Partners yn gweithredu un o fusnesau gweithredu pŵer adnewyddadwy mwyaf y byd a fasnechir yn gyhoeddus. Mae ein portffolio'n cynnwys cyflusterau trydan dŵr, solar, gwynt a storio yng Ngogledd America, America Ladin, Ewrop ac Asia ac mae ganddo fwy nag 16,000 megawat o gapasiti wedi'i osod.

### Gwybodaeth am Brookfield Renewable

Mae ENGIE yn gwella bywydau drwy well amgylcheddau byw a gweithio. Rydym yn helpu i sicrhau cydbwysedd rhwng perfformiad a chyfrifoldeb, gan alluogi cynydd mewn ffordd gyfün.

Rydym yn galluogi cwsmeriaid i groesawu byd carbon is, mwy effeithlon a chynyddol digidol. Mae ein cwsmeriaid yn elwa o'n datrysiadau ynni effeithlon ac adeiladau clyfar, darpariaeth o wasanaethau effeithiol ac arloesol, trawsnewid cyndogaethau drwy brosiectau adfywio, a chyflenwi ynni dibynadwy, hyblyg ac ymdebyddus.

Mae ENGIE yn gwmni ynni a gwasanaethau blaenllaw sy'n canolwntio ar dri gweithgaredd: cynhyrchu a chyflenwi ynni, rheoli cyflusterau ac adfywio. Mae ein 17,000 o gyflogion yn cyfuno'r galluoedd hyn er budd unigolion, busnesau a chymunedau ledled y DU ac Iwerddon.

### Gwybodaeth am ENGIE

Mae ENGIE yn gwmni ynni a gwasanaethau blaenllaw sy'n canolwntio ar dri gweithgaredd: cynhyrchu a chyflenwi ynni, rheoli cyflusterau ac adfywio. Mae ein 17,000 o gyflogion yn cyfuno'r galluoedd hyn er budd unigolion, busnesau a chymunedau ledled y DU ac Iwerddon.

Mae Canolfan Ymweilyr Mynydd Gwefru yn eiddo i Gwmni First Hydro

Mae angen gwaith adnewyddu ac uwchraddio ar Canolfan Ymweilyr Mynydd Gwefru. Felly mae Cwmni First Hydro wedi gwneud cais cynllunio i Gynghor Gwynedd am ddyrchwael rhan o'r ganolfan a'i hadnewyddu, ynghyd â gwaith tirlunio cysylltiedig a chreu mynedfa adeiladu dros dro.

## Ymweilyr Mynydd Gwefru, Llanberis Gwelliannau arfaethedig i Ganolfan



## Proposed Refurbishment of the Electric Mountain Visitor Centre, Llanberis

- The Electric Mountain Visitor Centre requires refurbishment and upgrading.
- A planning application has therefore been submitted to Gwynedd Council by First Hydro Company for the partial demolition and refurbishment of the centre, together with associated landscaping and the formation of a temporary construction access.

### First Hydro Company

- Electric Mountain Visitor Centre is owned and operated by First Hydro Company.
- ENGIE owns 75% and Brookfield Renewable owns 25% of First Hydro Company.

### About ENGIE

ENGIE is a leading energy and services company focused on three key activities: production and supply of energy, facilities management and regeneration. Our 17,000 employees combine these capabilities for the benefit of individuals, businesses and communities throughout the UK & Ireland.

We enable customers to embrace a lower carbon, more efficient and increasingly digital world. Our customers benefit from our energy efficient and smart building solutions, the provision of effective and innovative services, the transformation of neighbourhoods through regeneration projects, and the supply of reliable, flexible and renewable energy.

ENGIE improves lives through better living and working environments. We help to balance performance with responsibility, enabling progress in a harmonious way.

### About Brookfield Renewable

Brookfield Renewable Partners operates one of the world's largest publicly traded renewable power operating businesses. Our portfolio consists of hydroelectric, solar, wind and storage facilities in North America, Latin America, Europe and Asia and totals more than 16,000 megawatts of installed capacity.

Brookfield Renewable is listed on the New York and Toronto stock exchanges. Further information is available at <https://bep.brookfield.com>.

Brookfield Renewable is the flagship listed renewable power company of Brookfield Asset Management, a leading global alternative asset manager with \$285 billion of assets under management.



## Pam Ailddatblygu?

- Mae Canolfan Ymwelwyr Mynydd Gwefru wedi bod yn gweithredu ers dros 30 o flynyddoedd ac mae'n gyrchfan twristaidd mawr sy'n denu 175,000 o ymwelwyr bob blwyddyn.
- Hefyd mae'n cynnal nifer o ddigwyddiadau gan grwpiau cymunedol, a rhai digwyddiadau chwaraeon mawr.
- Fodd bynnag, nid yw'r cynllun na'r cyfleusterau'n briodol mwyach i gyfleuster twristaidd modern ac apelgar ac ased cymunedol. Mae'r adeilad yn gweithredu'n aneffeithlon ac mae'n llawer rhy fawr i'w ofynion presennol.

## Beth fydd y Ganolfan Ymwelwyr Newydd yn ei Gynnig?

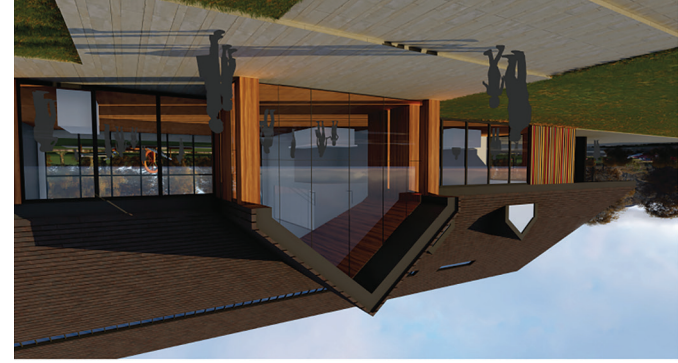
- Bydd yr adeilad newydd yn cynnig profiad difyr ac atyniadol i ymwelwyr, gan ddarparu adnoddau defnyddiwr-gyfeillgar a fydd yn apelio at dwristiaid ac ymwelwyr addysg fel ei gilydd.
- Hefyd bydd yn cynnig cyfleuster sydd wedi gwella llawer at ddefnydd y gymuned leol.
- Bydd y cyfleusterau newydd hyn yn cael eu cynllunio'n gynaliadwy ac yn cyd-fynd â'r amgylchedd a'r tirlun lleol.



### Cysylltwch â Ni

Os oes gennych ragor o gwestiynau am y prosiect ailddatblygu arfaethedig, neu os ydych chi am gael rhagor o wybodaeth am yr arddangosfa ar 17 Ebrill, cysylltwch â [communityhelp@electricmountain.co.uk](mailto:communityhelp@electricmountain.co.uk).

**Get in Touch**  
To ask any questions you might have about the proposed redevelopment project, or if you require more information on the exhibition on the 17th April, please contact [communityhelp@electricmountain.co.uk](mailto:communityhelp@electricmountain.co.uk).



- The new building will deliver an engaging and attractive visitor experience, providing user-friendly resources that will appeal to tourist and education visitors alike.
- It will also offer a much-improved facility for the local community to use.
- These new facilities will be sustainably designed and in keeping with the local environment and landscape.

## What Will the New Visitor Centre Offer?

- Electric Mountain Visitor Centre has operated for over 30 years and is a major tourist destination, attracting 175,000 visitors a year.
- It also hosts a number of community groups functions, and some major sporting events.
- However, the layout and facilities are no longer appropriate for a modern, appealing tourist facility and community asset. The building is operating inefficiently and is far too big for its current requirements.

## Why Redevelop?